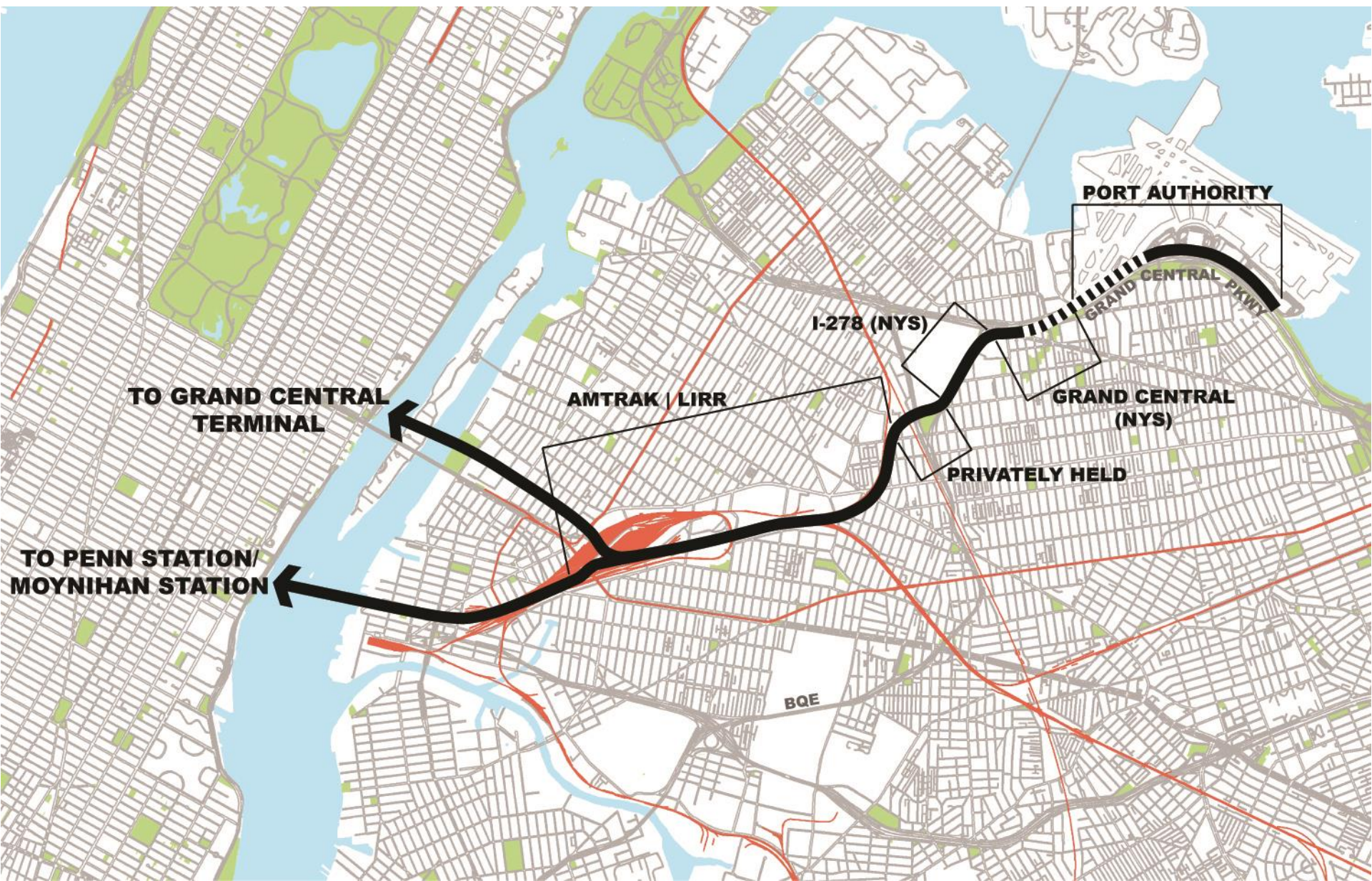


# LAGUARDIA**EXPRESS**

Rail connection between LGA and  
Grand Central Terminal | Penn Station

# concept

- 15 minutes
- One seat ride
- Off the shelf equipment
- Fully compatible
- Existing ROWs
- No residential acquisition
- Minimal commercial acquisition



**PORT AUTHORITY**

**GRAND CENTRAL PKWY**

**I-278 (NYS)**

**AMTRAK | LIRR**

**GRAND CENTRAL (NYS)**

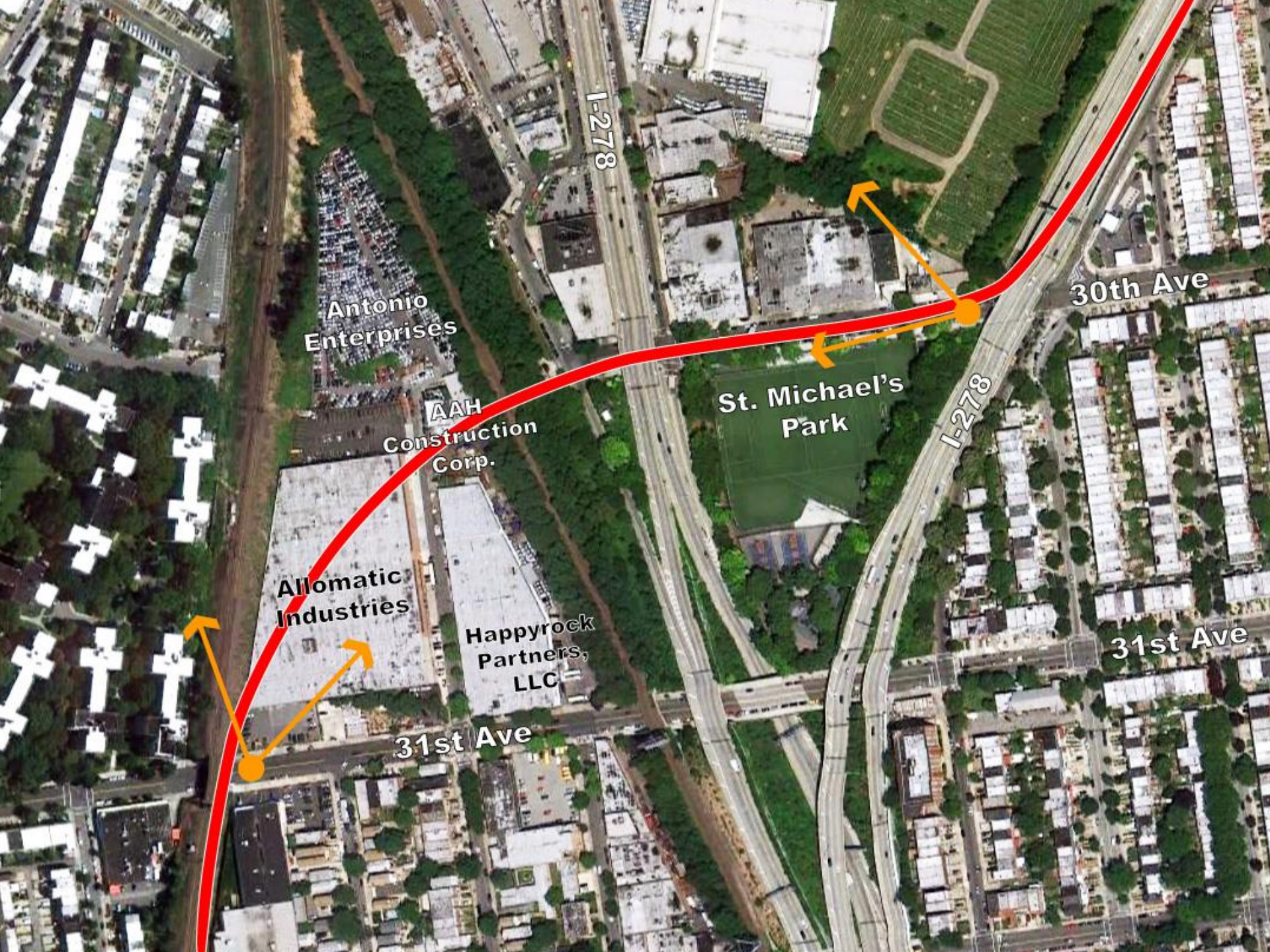
**PRIVATELY HELD**

**TO GRAND CENTRAL TERMINAL**

**TO PENN STATION/  
MOYNIHAN STATION**

**BQE**





Antonio Enterprises

AAH Construction Corp.

Allomatic Industries

Happyrock Partners, LLC

St. Michael's Park

I-278

I-278

30th Ave

31st Ave

31st Ave









# no fatal flaws

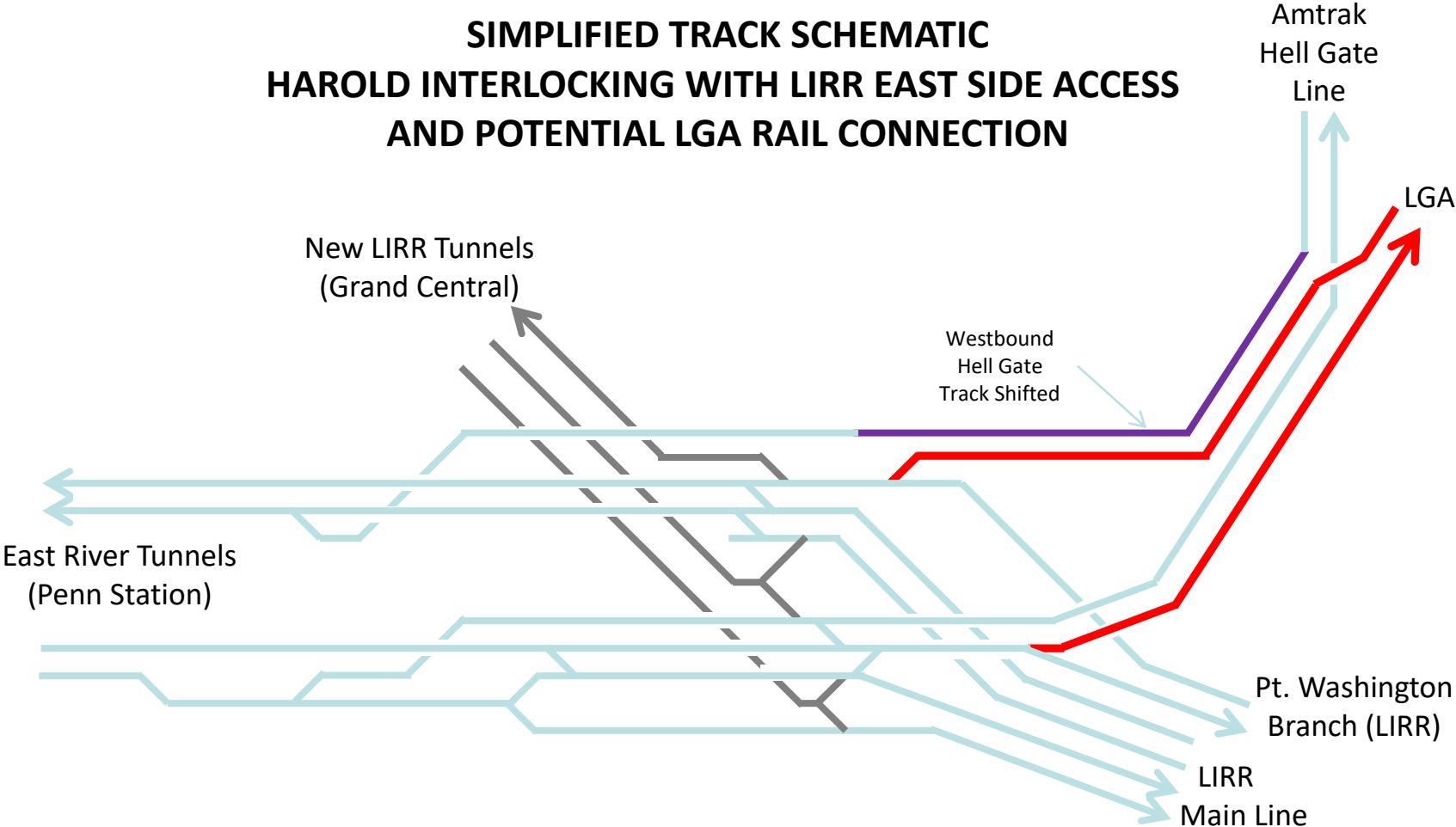
- Off the shelf technology
- Minimizes Sunnyside Yards & Harold Interlocking disruption
- Existing ROWs
- Station and tunnel capacity
- Vertical and horizontal alignments







# SIMPLIFIED TRACK SCHEMATIC HAROLD INTERLOCKING WITH LIRR EAST SIDE ACCESS AND POTENTIAL LGA RAIL CONNECTION







Astoria Blvd

30th Ave



# capital costs

**Summary Financial Information**

(\$ millions)

	<b>Construction</b>		
Duration	5-7 years		
Length	2.4 - 3.4 miles		
Stations	2		
Revenue Vehicles	22		
Frequency			
Build for:	10 minutes	36 vehicles	
Planned Operations:	15 minutes	22 vehicles	
	<b>15 Minute Headways</b>		
Construction	\$	520.0	
ROW, Land, Existing	\$	55.0	
Vehicles (new)	\$	85.0	
Soft Costs	\$	175.0	
Contingency	\$	550.0	
Interest	\$	-	
<b>Total Capital Cost</b>	<b>\$</b>	<b>1,385.0</b>	

# operations

## Summary Financial Information

(\$ millions)

	Construction	Start-Up	Operations	
			Low	High
Annual Riders			3,212,000	5,402,000
Average Fare			\$ 11.11	\$ 18.23
Passenger Revenue			\$ 35.70	\$ 98.50
Ancillary Revenue			tbd	tbd
Operating Costs			\$ (33.10)	\$ (33.10)
<b>Gross Margin</b>			<b>\$ 2.60</b>	<b>\$ 65.40</b>
SG&A	tbd	tbd	tbd	tbd
EBITDA				



# benefits

- LGA & NYC competitiveness
- Travel time
- Reliability
- Surface congestion
- Emissions
- Federally funded construction employment
- System integration
- No public operating burden